



FANfare



Friends and Neighbors Of FM 1960

September 2011



President's Message

School bells are ringing and moms are smiling. It's almost fall in Texas, but who would know? The calendar says "September," so it must be time to kick-off our new year on the first Tuesday of the month. I'll be wearing my new purple pillbox hat, and I hope you'll join in the fun by donning a bonnet, too. I know I can count on Lillian Blakesley and Joyce King. Carole Acker, find your sombrero!



can anticipate lots of great programs, trips and activities to come. How lucky we all are to have another group of hard-working and creative ladies directing our club this year!

We'll see you on September 6, wearing your favorite *chapeau*.

Debbie Laich

P.S. I'm even wearing my hat... Fancy that!



NEWSLETTER

VIA EMAIL

To receive the FAN newsletter via email instead of snail-mail, please contact Audie Brooks at

Brooks at

281-225-8977 or

audiebrook@aol.com

FAN

General Meetings

Meetings are held at 9:30 a.m. on the first Tuesday of the month at St. Ignatius Church, September thru May.

Meeting Dates

September 6

October 11

Please check Karen Baird's Sunshine Corner to stay current with FAN member news. Some members have had health issues and losses over the summer. It's always been a given that FAN friends are supportive of each other in any way needed, and that is still as important as ever.

I'm looking forward to working with our fabulous 2011-2012 Board this year, and you

Programs — Rita J. May, 1st VP

Let the year of Programs begin...

Austin Davis (professional comedian, was a policeman, health & fitness guru) brings us his "LAUGHING AT DANGER" Seminar/Program. He has a wonderful message for us about keeping safe and we will laugh along the way. Don't miss it!

Sunshine Corner — Karen Baird



It saddens me to report that Sandy Lang's husband passed away unexpectedly in early August. We share Sandy's sorrow and hope she knows that she can lean on her FAN friends in the weeks and months ahead for support.

Don Townzen, Pat's husband, is recovering at home after a brief hospitalization.

Ann Hickman is now home from the hospital after heart surgery.

Carole Acker has exchanged her dancing shoes for orthopedic sandals, but she is doing well after foot surgery.

As we continue to keep Sandy, Don, Ann and Carole close to our hearts, also remember those unspoken needs among our members.

Send Sunshine requests to Karen Baird at jandkbaird@aol.com or 281-651-6767. We prefer email because it provides documentation.

Membership — Audie Brooks, 2nd VP

Hello, all. The 2011-2012 directories are complete and ready to hand out at the September FAN meeting. The directories are especially nice this year. With Winnie Mitchell designing such a beautiful cover and Krailo Printing doing such a fine job, the results are awesome. Be sure to attend so you can sign for your very own directory. If you won't be at the September meeting but know someone who will be attending, have her sign for your directory. If you are in a bridge group or canasta group, etc., have your leader pick it up. If you do happen to pick up for someone else, be sure to sign YOUR name for her copy. If you want an electronic copy besides your printed book, email me and I will send it to you in PDF form. See you all on the 6th.

Audie Brooks--281-225-8977

audiebrook@aol.com

Returning Member (Add to your New Directory)

Carney, Marianne 3618 Sierra Pines Dr Houston, TX 77068	7/25 (Jack)	281-583-1174 jackback1961@att.net (Olde Oaks)
---	----------------	---

Gallenbach, Rosemary 2415 Spanish Oak Hill Ct Spring, TX 77388	6/11	281-288-7636 mspatches@att.net (Oaks of Devonshire)
--	------	---

New Member:

Dean, Dora 15427 Lakeport Cr Dr Cypress, TX 77429	1/17	281-246-1567 degd17@gmail.com (Coles Crossing) cell: 713-385-7485
---	------	--

Socials planned for 2011-2012

We are looking forward to some fun this year and hope you will attend at least one of our socials. Couples are welcome.

?? **Saturday, October 29** ?

The Mystery Cafe @ Marriott W Loop Hotel, 1750 W Loop South (Galleria Area).

Includes a 3-course dinner, 4-act play, non-alcoholic drinks, gratuity and parking. Cash bar available. Cost is \$52 per person, as long as we have at least 10 participating.



Saturday, January 29

Sam Houston Raceway Park Winner's Circle. Includes dinner and thoroughbred horse races, admission, gratuity and tax. Cost is \$35 per person.

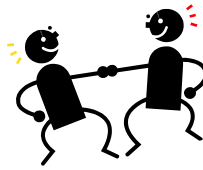
Saturday, April 14



Houston Family Art Center presents a Mystery Comedy, "The 39 Steps." Cost is \$16 per ticket.

Sign-up sheets will be available at the September 6 meeting. For October's Mystery Cafe, please pay when you sign up or mail a check to Linda Neibel, 15310 Walters Rd, 77068, before October 14. Telephone Linda @ 281-583-5111 for more information.

PROFILE OF A FAN GREETER



Are you a smiley person?

A magnet chick?

Can tell when the clock points to 9:15 a.m.?

Like to mingle with the FAN elite?

Can find your way to a buffet table?

Never met a strange stranger?

LOL is your favorite abbreviation?

Remember when you went to a ladies' meeting and didn't know a soul?

If you say **YES!** to one of these questions, you are a natural greeter.

Please sign up on the Greeter Volunteer Sheet to welcome FAN ladies at the next meeting.

THANKS,

Shirley Limbaugh,

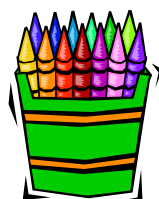
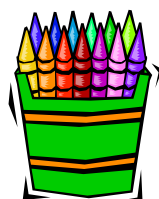
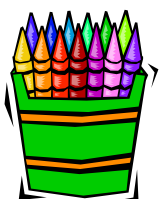
Greeters' Chair

Phone: 281-440-7418 or

Email: SLLimbaugh@Yahoo.com



Three people check into a hotel. They pay \$30 to the manager and go to their room. The manager suddenly remembers that the room rate is \$25 and gives \$5 to the bellboy to return to the people. On the way to the room the bellboy reasons that \$5 would be difficult to share among three people so he pockets \$2 and gives \$1 to each person. Now each person paid \$10 and got back \$1. So they paid \$9 each, totaling \$27. The bellboy has \$2, totaling \$29. Where is the missing \$1? (See page 8 for answer)





Dreamin' of a Country Christmas

Please mark your calendar! FAN's annual Christmas luncheon will be held on Tuesday, December 6, at Shirley Acres. The cost will be \$31, which will include a \$5 donation to our chosen charities. Tickets will be on sale at the October & November meetings. Next month's newsletter also will include a reservation form.

We've had several great suggestions for recipients for our donation. If there is an organization you would like considered, please let me know.

As usual, we're looking for donations for raffle prizes and the silent auction. There are so many talented FAN members out there; we should have some great items. We'll also be asking the Activity Leaders to coordinate their groups' donations.

Thanks! Kathy Michalski

katyamichalski@sbcglobal.net



HOSPITALITY

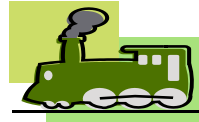
For those of you eager to dust off your oven and contribute goodies to the hospitality table, the sign-up sheet will be available at the September meeting. If you can't attend the September meeting and wish to contribute in later months, give us a call. We are looking forward to a great year of wonderful goodies at each meeting.

Jo Ellen Wade

joellen.wade@comcast.net or

Barbara Kerr

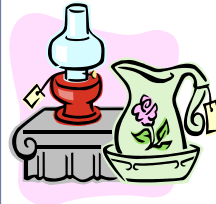
bkerr1974@hotmail.com



Mexican Train Dominoes will meet at 9:30 a.m., Thursday, October 6 at the EGG & I restaurant located at 249 and Louetta.

Cost to play is \$1.00 plus cost of lunch.

If you are interested in playing, please contact Rosemary Felix at 281-376-5204 or e-mail at rmbfelix@sbcglobal.net.



ANTIQUERS & JUNKERS

This group meets on the third Wednesday each month for a fun-filled day of antiques, eating and shopping.

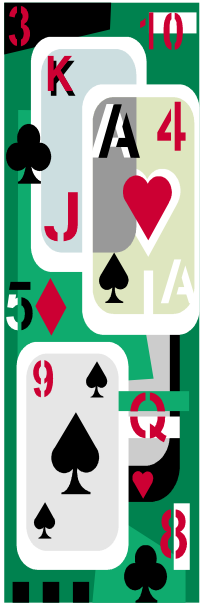
This month we will meet on Sept. 21 at Betty Horelica's home at 13310 Coral Ridge Court, earlier than usual at 8:30 a.m. for coffee. We leave early because this is the weekend for Warrenton so there will be a lot of traffic. We will carpool to Brenham with our first stop being Leftovers on Hwy 290 near Brenham. From there we will go to the Brenham square and start on the shops. We will lunch at Ernie's at noon. Please reply in plenty of time so we can get our reservation in for lunch as well as plan for how many cars we need to carpool.

Call Betty at 281-580-8491 or email bhorelica@sbcglobal.net.

If you are not a member of this group and are interested or have questions, please contact chairman:

Bert Forbes @ 281-304-2444 or afortbesw@aol.com

ALL ARE WELCOME!



COUPLES DINNER BRIDGE

When: Meets the 3rd Saturday each month.
RESERVATIONS are required, **new couples** welcome

Date: September 17 promptly at 5 p.m.

Where: Spring Creek BBQ, 4220 FM 1960 West

September Hosts: Rita & Dean May Phone: 281-655-9866

Many thanks to Pat & Gene Broccard for hosting in August.

Want to play Bridge...or play more Bridge?

Sign up at the September 6 meeting. These ladies want to play with us so call them when you need a sub.

Twylla Conner 281-587-1131 DD Carolyn Gibbs 281-370-9391 DP DD EP ED Claudia Yoesel 281-251-1699 DP

Jerri Hollingsworth 281-440-6479 DD Ann Moore 281-893-0637 DP DD EP ED

Call Joyce King (281-469-0248) to play every Friday at Hunan Restaurant.

They had 13 tables last week... LOTS OF FUN!

Questions? Call Pat Unrau, chairman of the Bridge groups.

281-355-8340 or e-mail Jerryunrau@cs.com

COUPLES DINNER CANASTA

WHEN: 3rd Saturday each month

TIME: 6:00 p.m.

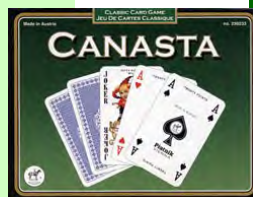
COST: \$2.00 per person,
plus dinner

PLACE: **Café Express**, FM 1960 in
the Champions Shopping Center.

CONTACT: **Debbie Laich**, 281-251-5212

debbielaich@comcast.net

New Couples Welcome !



RAILROAD CANASTA

Looking for new players!!

We play on 3rd Thursday of month at the
Willowbrook Fuddruckers. Cost is \$2 to play, plus
\$1 for tip. No reservations needed.

Questions? Call Susan Hoff 832-446-6042 or

Barbara Bolz 281-370-8357

CANASTA I

We play at Willowbrook Fuddrucker's the 4th Tuesday at
10:00 a.m. Charge: \$3.00

ALL FAN MEMBERS ARE WELCOME!

NO RESERVATIONS!

Questions? Call **Carol Well**, 281-251-5223



Lunch Bunch

We meet for lunch and friendship the third Wednesday of the month, usually in the home of a FAN member. You bring a non-sweet dish to share. Our co-hostess provides the dessert.

January, June and July we lunch at different restaurants.

Check the FANfare newsletter each month for hostess and time. Come join us, we have a good time.

September 21 - 12 noon

Hostess is LuAnn Kubis

Bring your non-sweet dish to share.

Call LuAnn for reservations before September 20.

For more information call
Sharlene Wesson 281-251-6940



"Snap A Smile"

**Hats off to
Sharlene Wesson!**

She was the first member to share photos for use in the 2011-2012 FAN scrapbook! She will receive a prize at the September general meeting. Plan ahead, ladies, and bring photos to us at the meeting or email them to linden7723@att.net. We'd love to feature all Fan activities, and we count on YOU to help!

Lin Fish & Sue Muller

Historians

Overnight Trip

October 21—23

Sign up now for our first overnight trip of the new FAN year.



We're going to the Beaumont-Orange area, traveling first class in a motor coach with room for 40-45 ladies. What the heck is in Beaumont & Orange?

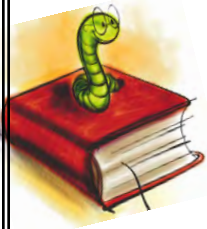
Our hotel is on a lake that backs up to a wildlife refuge with a large patio where the group can visit and become better acquainted. There are beautiful historic homes and churches, 'Shangri-la' botanical garden nestled within 252 acres in the heart of Orange and great shopping. You will get to make new friends from FAN and even learn the sinister history of the founding family of the area.

Your payment of \$200 includes two nights at the hotel, coach transportation, entry fee to the attractions, catered dinner one night and breakfast each morning.

For early registration and to reserve your space, sign up at the September 6 meeting or send your check in now along with your roommate's name to:

Linda Fisher
6130 Willow Pine Dr.
Spring, TX 77379





LITERARY REVIEW

Date: September 28, 1:00 p.m.

Book: Major Pettigrew's Last Stand

By: Helen Simonson

Leader: Barb Hine

Host: Patsy Justice 281-251-2051

Address 17619 Hidden Forest
Memorial Northwest

Directions: On Louetta between Champion Forest Drive and Stuebner Airline, turn N on Theiss Mail. Go to 2nd STOP sign (1 mile) to Hidden Trail and turn left. At Hidden Forest, turn right. Patsy's house is the 5th on the left.

In October we will read and discuss

The Outskirts of Normal

by Debra Monroe

Contact: Winnie Mitchell, 281-580-6672

wam281@earthlink.net

Daytime Excursion

October 28

Galveston get away for the day.

We will tour and take part in the Hotel Galvez 100 year celebration exhibit. Lunch will be in the hotel restaurant. Be prepared: it has been reported haunted and it's so close to Halloween.... **who knows what ghostly occurrences may happen.**

You don't want to miss viewing the amazing sculptures from trees on the island ruined by Hurricane Ike, shopping and much more.



We will meet at Randall's on Champion Forest & Louetta. The bus leaves at 9 a. m.

No refunds after October 14; please register at September meeting.

Eagle Scout

Musical Instrument Drive

Grace Casagrande's grandson, Michael Casagrande, is a sophomore at Klein Oak High School. As a member of BSA Troop 1333, Michael is planning a musical instrument drive for his Eagle Project. All donations will benefit the 5th grade strings and band programs in Klein ISD to be used by underprivileged students whose parents cannot afford to rent an instrument. If you have an instrument to donate, please contact Michael at 281-251-9765 or mjcasagrande@comcast.net. Donations can be brought to the September meeting. Michael is accepting cash and check donations that will be used to repair these instruments or to buy new ones. All donations are tax deductible.



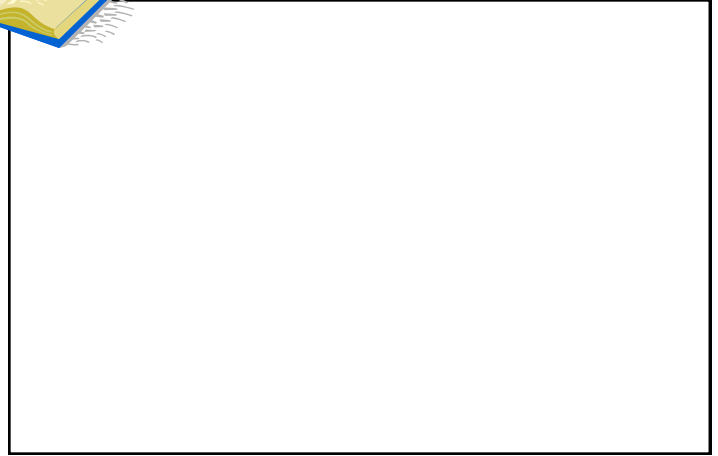
SEPTEMBER 2011

Newsletter Editor:

Belinda Evans
7514 Waning Star Ct
Spring, TX 77379



**FRIENDS &
NEIGHBORS**
OF FM 1960



Editor's Note

All articles for the October newsletter should be submitted before **September 12** to bsevans55@yahoo.com. Deadline for last minute changes is **September 20**.

To update address labels, please contact Audie Brooks.

ANSWER TO BRAIN TEASER

We have to be careful what we are adding together. Originally, they paid \$30, they each received back \$1, thus they now have only paid \$27. Of this \$27, \$25 went to the manager for the room and \$2 went to the bellboy.

