



FANfare



Friends and Neighbors Of FM 1960

DECEMBER 2014/JANUARY 2015

PURPOSE

To provide an opportunity for members to become acquainted with others in the community in an atmosphere of friendliness, goodwill and helpful information.

To undertake and to promote charitable and humanitarian projects within the community.

To form enduring friendships.

FAN General Meetings

Meetings are held at 9:30 a.m. on the second Tuesday of the month, at **JOHN WESLEY METHODIST CHURCH** September thru April. Our next meeting will be on January 13, 2015

Have you Moved?
Has your telephone number or e-mail address changed??

Contact Pat Quackenbush
Patquackenbush @
sbc global.net



PRESIDENT'S MESSAGE

Betty Horelica

We are coming to the end of 2014 and looking forward with anticipation to 2015. This past year in FAN has been in a whirlwind.

FAN members have enjoyed many activities that could not have been done without the help of our volunteers. In order for FAN to continue with so many things to enjoy, we need members to step up and volunteer. In January, I will put together a nominating committee. It has been hard in the past few years for the committee to get members to step up and take over the vacant positions. I am hoping the coming year will be different.

I can share with you that having served for the past few years in various positions, it has been a very rewarding experience. Had I not gotten involved with volunteering at FAN, I'd never have met and become friends with so many wonderful women. Please give some thought to coming forward when the members are announced and ask for your input. They won't know you are willing to help if you don't inform us.

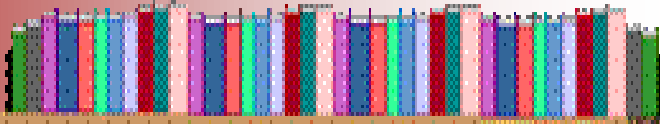
These past few months we've had some great activities. Margaret Burgess took a group to San Antonio for a fantastic trip. Margaret does a great job as OVERNIGHT TRIP CHAIRMAN. We are very grateful to have her in this position.

Margie Rogers and Sue Muller, SOCIAL CO-CHAIRMAN, arranged a delightful Progressive Dinner, and in January we will be off to the races.

Linda Fisher has finalized the COOKIE EXCHANGE. It is one of my favorites. The exchange is always so much fun, and we get to take cookies home to enjoy with our families.

Our VICTORIAN CHARITY CHRISTMAS LUNCHEON will be on December 2. It's going to be a wonderful event and I hope the majority of you will attend. Sherri Lauritsen, Sherry Dunn and Denise Hunt have enjoyable plans for all of us. **NOTE: THE CHRISTMAS CHARITY LUNCHEON TAKES THE PLACE OF OUR DECEMBER GENERAL MEETING.**

I wish all of you a very MERRY CHRISTMAS and a BLESSED NEW YEAR. I look forward to seeing all of you in 2015!



FAN BOOK CLUBS

These books are being read by our FAN Book Clubs for December 2014/January 2015

Literary Review Charla Hannibal

Literary Review does not meet the month of November. HAPPY THANKSGIVING! The Christmas Book Exchange luncheon will be Thursday, December 11, 2014. PLEASE NOTE: This is a change from our posted schedule. Details will be in the FANfare in December.

Cover Girls Maria Bocchino

January 28, 2015

Book: The Gilly Salt Sisters

Author: Tiffany Baker

Please contact Maria if you would like to be placed on our waiting list.

Marite.bocchino@gmail.com

Page Turners Adrienne Juno

December 10, 2014

Book: **Loving Frank**

Author: Nancy Horan

Hostess: Jacqueline Webster

January 7, 2015

Book: **We Need to Talk about Kevin**

Author: Lionel Shriver

Hostess: Kathy Michalski

Mystery Club Patricia Torgersen

January 5, 2015

No meeting in December! Next meeting on Monday, January 5, 9:30-11:30 a.m. at Trish Torgersen's home. We are reading In the Bleak Midwinter (good title for January, right?) by Julia Spencer-Fleming. The first in a series featuring a female Episcopal priest and former Army helicopter pilot assigned to a small town parish in upstate New York, it won five major awards for first novel. For more info, email torgersenp@gmail.com.

FAN Website

For members only

The FAN *members'* website is

<http://fan1960.wordpress.com>. As events unfold in our FAN community, I will post them to your FAN *members'* website. You can always find current and archived copies of the newsletter, the membership form as well as elected board and extended board members' names and their pictures. I will continue to post social events as they unfold this year. Be sure to add the FAN website to your "Favorites" or "Bookmarks" on your computer. You just may find your picture on the website! Contact me with any news or concerns.

FAN Website

For the public

I will also be managing the FAN *public* website. This website is for anyone interested or curious about FAN. Simply type in your browser **Friends and Neighbors of FM 1960 Women's Club** or perhaps **women's club FM 1960** and the site should be listed. The website's address is <http://fan1960.club>. General information about our club is provided as well as an application form. Invite your friends and neighbors to check out this site.

FACEBOOK

I have created a **FACEBOOK** page for FAN. If you are a member of **FACEBOOK**, please search for **Friends & Neighbors of FM 1960 Women's Club** and like the page. Please add comments or happenings/events about your activity groups if you wish. The address is <http://www.facebook.com/FAN1960Club> .

Thanks,

Barbara Kerr

Bkerr1974@hotmail.com

Web Manager

UPCOMING EVENTS

We're off to the races in January 2015! Come join your FAN friends at the **WINNER'S CIRCLE RESTAURANT** at **SAM HOUSTON RACE PARK** on Saturday, January 24, 2015 for "Houston Ladies Classic Night!"

Address: Sam Houston Race Park
Winner's Circle Restaurant
7575 North Sam Houston Parkway West
Houston, TX 77064



The park and the restaurant open at 5 p.m., and the first race starts at 6 p.m. The cost for the buffet dinner, tax, gratuity, general parking and entrance into the park is \$28 per person. You may sign up and pay at the October and November meetings or send me a check (made out to FAN) to **Sue Muller**, 722 Romaine Lane, Houston, TX 77090. **Please include the names and number of people in your party.** Bring your husband, friends, etc.

Sue and Margie

SECOND VICE PRESIDENT'S REPORT

We had a great turnout for the November meeting! Our current membership consists of 296 members, which includes the two new members who joined at the November meeting. The contact information for the new members follows.

Henthorn, Dorothy

6650 Radley Drive
Spring, TX 77379
Subdivision: Wimbleton Estates
Home phone: 281-370-8226
Cell phone: 713-569-3917
Email: dothenthron@sbcglobal.net

Young, Brittney

15802 Dawnbrook Drive
Houston, TX
Subdivision: Olde Oaks
Home phone: 281-440-7512
Email: brittneyayoung@yahoo.com

There are a couple of changes of record:

The zip code listed in the directory for **Barbara Bolz** is incorrect and should be 77373.

Sherri Lauritsen has a new address: 15942 Clipper Pointe Drive, Cypress, TX 77429. She no longer has a land line but her cell phone remains unchanged. Her new email address is: sherilauritsen@gmail.com

Sharon Plescia has a new e-mail address: sharonple@att.net

HISTORIAN'S CORNER

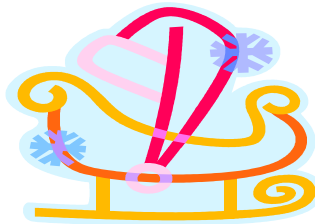
If you have any pictures of your groups, please email to me, and if you would like me to take photos, let me know. You will be reimbursed for any pictures you take if you will provide a receipt and send it to me.

Mona Malone 586-549-6899
raceway2texas@yahoo.com



“VICTORIAN CHRISTMAS” HOLIDAY CHARITY LUNCHEON

Come kick off the holiday season with delicious food, fun shopping, and great deeds for our community! We vote on the best items for the silent auction and raffle items that have been donated by our creative members and our activity groups.



season on December 2, 2014 with delights with your friends while doing good to support L'Amor Residential Treatment Facility. One way to help varied auction and raffle items that have been donated by our creative members

Remember to bring cash for the raffle tickets and checkbooks for auction items.

We'll deck the halls of Shirley Acres... You will deck yourselves out in your favorite holiday finery and come celebrate Friends and Neighbors, and the holiday season.

Please deliver items for the silent auction and raffle to one of the following ladies:

Sherri Lauritsen, Cole's Crossing

Priscilla Browne, Cypresswood

Clarita Doussan, Gleannloch Farms

Bonnie Reddehase, Westador

Gwen Barfield, Spring Creek Forest

Trish Torgersen, Wimbledon

If you need ideas or have any questions, please contact either of the co-chairs:

Denise Hunt 281-251-4882 or 281-686-4882 dhuntint1@aol.com

Sherry Dunn 281-430-4567 or 713-857-2131 sdunn@entouch.net



Please bring address labels that you may have. It makes it soooo easy to affix to the backs of the raffle tickets instead of writing your name.

LUNCH BUNCH

The Lunch Bunch will be meeting on December 19 at noon, and Carol Huddleston will be the hostess. **Please be sure to call her at 281-970-9501, if you plan to attend.** Bring a non-sweet dish for our Christmas luncheon. Bring a wrapped gift that is Christmas-related. This will be a real holiday treat for you!

In January 2015, we will eat at a restaurant to be announced, instead of meeting at a member's home.

Sharlene Wesson, chairperson

281-251-6940

DAY TRIPS

Save the date:, March 31, 2015, for an interesting and fun trip. Hope this has peaked your interest!! Sign up in January, by calling me.

Sharlene Wesson



January 2015 General Meeting Lunch Bunch

To get our FAN 2015 season off with a fresh start I would like to offer our membership an opportunity to help in choosing the January post general meeting lunch venue. Many of you have favorite dining spots with which the rest of us may not be familiar. Please share those with us by sending their names, addresses and phone numbers to **char-markstx@aol.com** by December 10th. The restaurant must be able to accommodate a sizeable group, (our numbers have ranged from 26 to 43 this year) and it should be within a reasonable proximity of John Wesley Methodist Church. Please share your hidden gems with us.

Char Marks

Greeter Chairman

FIRST VICE PRESIDENT'S PROGRAMS

For the month of January 2015, our speaker will be Rebecca Palacios from Whole Foods Market - Champions. Rebecca will talk about their commitment to our community, the company's foundation, core values, programs, and the uniqueness of their stores. Please join us for this informative presentation about Whole Foods.

Markett Harkinson

Antiquers and Junkers December 2014 meeting

We always meet on the third Wednesday of each month, September through May. This month we will meet for coffee at the home of Lin Fish's at 7723 Waning Star Court in the Retreat at Champion Woods in Spring, Texas at 9:00 on December 17. Her home phone number is 281-580-6336 or email **linden7723@att.net**.

We will carpool to Old Towne Spring and have lunch at Ellen's. Please let both Lin and me know by December 15 if you are coming, if you can drive, or if you need a ride.

All are welcome and **if you have any questions, please contact Bert Forbes at 281-304-2444 or email aforbesw@aol.com**

MOVIE GOERS ENJOY MONTHLY MATINEE

Movie studios release many Oscar-caliber films in the fall, and FAN members gather to view and review them. Meet us the third Monday of each month for a matinee at an area theater. Whether it's a comedy, suspense, romance or something unique, we pick the best pictures playing, often enjoying award-winning performances and films.

E-mail your interest to **Lin Fish (linden7723@att.net)** to receive an e-mail each month regarding the movie title, theater, and time. Come along when something interests you, but be sure to pencil in the date: **The third Monday, early afternoon!**

COOKIE EXCHANGE

The annual FAN Christmas Cookie Exchange will be held on Friday, December 12, 2014 in the Spring Creek Oaks Clubhouse at 11 a.m. Cost for admission is \$13 plus three dozen (36) cookies. They should be bagged in sandwich or snack bags—one cookie per bag.

It's too late to sign up at the general meeting, but you still may send your reservation and \$13 to Linda Fisher, 6130 Willow Pine Drive, Spring, TX 77379. We are limited to 36 members. Any questions, call **Linda Fisher** at 832-978-8259.

NO REFUNDS AFTER NOVEMBER 30, 2014.

Linda Fisher **lpfisher3@aol.com** or 281-376-6799



Antiquers and Junkers, January 2015

We will meet for coffee at the home of **Sheila Gibbs** at 11619 Regency Forest Drive in Regency Forest, Cypress, TX 77429 at 9:00 a.m. on January 21, 2015, phone 281-890-3948, or e-mail her at **12gibbs@att.net**.

SOCIAL EVENTS

We all had a great time at the Progressive Dinner on the first of December. It was a good way to mix and get to know new and old FAN members. The **Rogers's, Harkin-Horelica's** did fantastic jobs of making everyone feel welcome and Thanks to everyone.

The horse races are going to be another evening of fun and great food. We have almost 70 people signed up for **Sam Houston Race Park** on **January 24, 2015** for the be sitting at the six top tables with only costs \$28 per person for parking, entrance into the park, buffet, tax, and gratuity.

We are still taking reservations until December 31, 2014. If you are signed up and have not yet paid, please send me a check by December 31, 2014, and mail your check to Sue Muller, 722 Romaine Lane, Houston, TX 77090. **There will be no refunds after January 10, 2015.**



members. The **Rogers's, Harkin-Horelica's** did fantastic jobs of making sure we had a good time.

be another evening of fun and great signed up for **Sam Houston Race** races and a great buffet. We will windows overlooking the track. It

COUPLES DINNER BRIDGE

This group meets on the 3rd Saturday of the month at 5 p.m. at Spring Creek BBQ, 4220 FM 1960 W. We play Party Bridge from 5 p.m. to 9 p.m. We eat dinner together at 6 p.m. then play bridge until 9 p.m. changing partners each round.

Please let me know if you would like to join **Sandra Lamborn, 281-580-4210 or lamboss@earthlink.net**

CANASTA I

We play at Willowbrook Fuddruckers the 4th Tuesday at 10:00 a.m. Charge: \$3.00

ALL FAN MEMBERS ARE WELCOME!

NO RESERVATIONS!

Questions?

Call **Melody Williams, 281-440-7512**

Sending sunshine wishes to our friends

Please keep in your thoughts and prayers these friends and neighbors who are ill or recovering or have great news to share:

Our thoughts and prayers go to Mona Malone and her family. Her son continues to heal from a head injury. Mona says it was our prayers that have helped in his recovery, so please continue to pray for his complete recovery.

Pat Ramsey is healing from knee surgery. Please keep her in your prayers.

Joyce Allmon is healing well from her surgery, but there are risks of seizures. She asks that we continue to pray for her.

Please contact me at: juneb6903@hotmail.com or call me at 281-323-4581 with news to share.

June McMillin

DUPLICATE LITE BRIDGE

Are you an experienced Party Bridge player? Would you like something a little bit different? Try Duplicate Lite.

You will be assigned a different partner every month. No conventions need to be played and you'll speak your bid like in party bridge. Someone will always assist you on how to score until you feel comfortable.

We are a friendly group and welcome new players as subs or regular players.

The group meets on the first Wednesday of each month at 10 a.m.

For more information or to have questions answered—contact **Corinne Sloan** **281-444-1537** **CorinneLS@aol.com**

NEEDLE ARTS LOVERS

If you enjoy any type of needlework (cross stitch, knitting, beading, quilting, embroidery, etc.); hook work (crocheting, hook rug, latch hook, etc.), or sewing (save your hems and other handwork and bring it along) and want to double your fun, come join the Needle Arts Lovers (NAL) group.

Our group likes working on projects while we share joy and our latest works-in-progress. We enjoy conversations with other ladies who share an appreciation for Needle Arts.

We get together on the first Wednesday of the month from 10 a.m. to 1 p.m. Prior to each meeting, we will announce where it will be held. If you cannot make it by 10 a.m., just come when you can, even if it is only for an hour. The hostess for each meeting provides beverages, but no food. Sometimes we also go out to lunch.

Just sign up at one of the FAN meetings or call Pat Quackenbush at 281-350-0429 or patquackenbush@sbcglobal.net. If you want to come to a meeting to check us out, contact Pat Q. Happy Stitching!



RAILROAD CANASTA

Looking for new players!!

We play on 3rd Thursday of the month at the **Willowbrook Fuddruckers**. Cost is \$2 to play, plus \$1 for tip. No reservations needed.

Questions? Call **Susan Hoff 832-446-6042** or **Eileen Kelly 281-516-1535**

New players always welcome

We are happy to teach you this fun game



FAN Nature Walkers

On one beautiful, perfect sunny date, we visited a favorite area: Burroughs Park in Tomball, TX. This 320 acre hidden jewel provided us with lush landscapes, winding wooded trails, and a lake for an enjoyable nature walk.

Future hikes will be scheduled through the winter months, so come and join us for a refreshing opportunity to enjoy the many parks in our Precinct 4 area. We are outdoors from 90 minutes to two hours, and walk at a friendly pace. You will return home with a renewed appreciation for nature and your new friends.

Send me your e-mail address and phone number so I may include your name on the nature walking list. Plans are finalized as to date, time, and location via a group e-mail one to two weeks before the walk.

Looking forward to meeting you on one of our hikes.

Jacqueline Webster

jcwebster1@sbcglobal.net

TREASURER'S NEWS

THANK YOU, THANK YOU LADIES!! At our November meeting we made FAN history. We sold \$199 worth of raffle tickets. I donated \$1 to make it an even \$200;. FAN kept \$100 and **\$50** went to **June McMillin** and **\$50** to **Olga Rivera**. Nancy McCreary won two tickets for Comedy Sports given by the speaker at the meeting. I truly appreciate your cooperation and support in buying the raffle tickets. Remember to bring your snowflake dollars for our January meeting, as it will be snowing!! Many, many thanks.

Idalia Skates

December 2014/
January 2015

Newsletter Editor:

Clarita H. Doussan
9502 Sherwick Ridge
Spring, TX 77379

**FRIENDS &
NEIGHBORS**
OF FM 1960



EDITOR'S NOTE

All articles for the February 2015 newsletter should be submitted before **January 15, 2014** to **Clarita Hennig** at chennigd@outlook.com, with a copy to **Sharon Plescia** at sharonple@att.net. Deadline for last-minute changes is **January 24, 2014**. To update your address, please contact **Pat Quackenbush** at patquackenbush@sbcglobal.net or 281-350-0429