



FANfare



Friends and Neighbors Of FM 1960

September 2010

President's Message

FAN General Meetings

Meetings are held on the first Tuesday of the month at St. Ignatius Church at 9:30am, September through May.

2010-2011 Meeting Dates

- September 7, 2010
- September 28, 2010**
- November 2, 2010
- December 7, 2010
- January 4, 2011
- February 1, 2011
- March 1, 2011
- April 5, 2011
- May 3, 2011

By the time this *FANfare* reaches members, we'll be headed to the first general meeting of the new FAN year. Hopefully you've had time to rest.....we'll need our energy for all the fun stuff the Extended Board is planning!

Let me introduce a few Executive Board members this month...this will also be helpful to you in the spring when we call for new Board nominations. Be thinking throughout the year which of these offices would be of interest to *you* for 2011-2012.

KATHY MICHALSKI is the First VP of PRO-GRAMS. Kathy also served last year. Remember the true crime author, Kathryn Casey? "One Woman Broadway" tunes with Barbara Jennings? Richard Bloom's Personal Safety presentation? and the delightful Draper's and Damon's Style Show in the spring with FAN models? All those were planned by Kathy Michalski. Not surprised we begged her to come back this year, are you?

AUDIE BROOKS is our super-efficient 2nd VP of MEMBERSHIP and was FAN President in 2008-2009. Audie maintains all membership records, including The FAN Di-

rectory which has already gone to press so we can have it on September 7th. (And just wait 'til you see Winnie Mitchell's exquisite new directory cover!) Audie has toiled diligently rounding up membership dues so we'll all be included in the directory. Look for her at the membership table when you come in.

ADRIENNE JUNO is our very creative NEWSLETTER EDITOR for the second year. Each month she composes the paper, sends it via email to the printer, assembles the pages, folds it, stamps it, and mails it. The hardest part is probably begging the Board to get our articles in on time...no wonder she needs a vacation south of the border!



As a final note, come early to the first meeting so you can view slides from the summer activities: July 16th daytrip to the

Co-Cathedral and the July 31st overnight trip to Round Top and Winedale. Both events were well-planned, informative, and LOADS of fun...but the best part was the fellowship with FAN friends.

You'll find the slide show on the Activities table.

See you on September 7th!

Debbie Laich

Did you know that September's...



Flower is an Aster & Gemstone is a Sapphire

Programs – Kathy Michalski, 1st VP

Be sure to join us for our September meeting when the Salvation Army Harbor Light Choir will be performing. They are VERY good. Their CDs will be available for purchase. Songs of Mercy and Songs for All Seasons are \$10.00 each. Also for sale is their Christmas CD, which sells for \$20.00 since it is a dual disc. Cash and checks only, please.

Our October meeting (September 28) will feature The Apron Lady, Virginia Helweg, who will be sharing some of her extensive apron collection with us. Virginia asked that you bring (or wear) aprons that mean something to you. I'm also looking for several people to model her aprons. If you are interested, please contact me at 281 251-1682 or katyamichalski@sbcglobal.net.

See you in a couple of weeks!



Membership – Audie Brooks, 2nd VP

Hello ladies. Be sure to attend the September general meeting. We are going to have a great program, food, and you will get your directory. After you sign in, look for three gals handing out directories at a table right before the activities tables. You will need to sign by your name showing you received it. You will be able to pick up directories for members not present, but be sure to sign 'your name' in their spot. It might also be a good idea to put their name on their directory so no one else will think it belongs to them. See you soon.

Audie Brooks 281-225-8977 audiebrook@aol.com

Sunshine Corner — Karen Baird



Our sympathy goes out to the family of **Lorraine Farmer**, who passed away in late July. Lorraine was active in Bunco and Book Club. Lorraine's daughter, Kathy Newman, has written a wonderful tribute to her Mom which can be found later in this newsletter.

A wish for a speedy recovery is sent to **Sharlene Wesson** who was recently hospitalized. Many of our daytime excursions occur only because of Sharlene's efforts.

Our sympathy is also extended to **Pat Unrau**, whose mother, Dee Sarcone, recently passed away. We hope Pat and her family derive comfort in knowing the FAN family sends them special prayers in the weeks ahead.

Clarita Doussan's husband is resting comfortably at home after a recent hospitalization. We wish him well.

We also want to acknowledge those FAN members who are undergoing struggles in their lives' and hope comfort will come to them soon.

Thank you to all FAN members who notify me about situations that I can explore for the Sunshine Corner. I can be reached at 281-651-6767 or at jandkbaird@aol.com.



NEEDED FAVORITE RECIPES

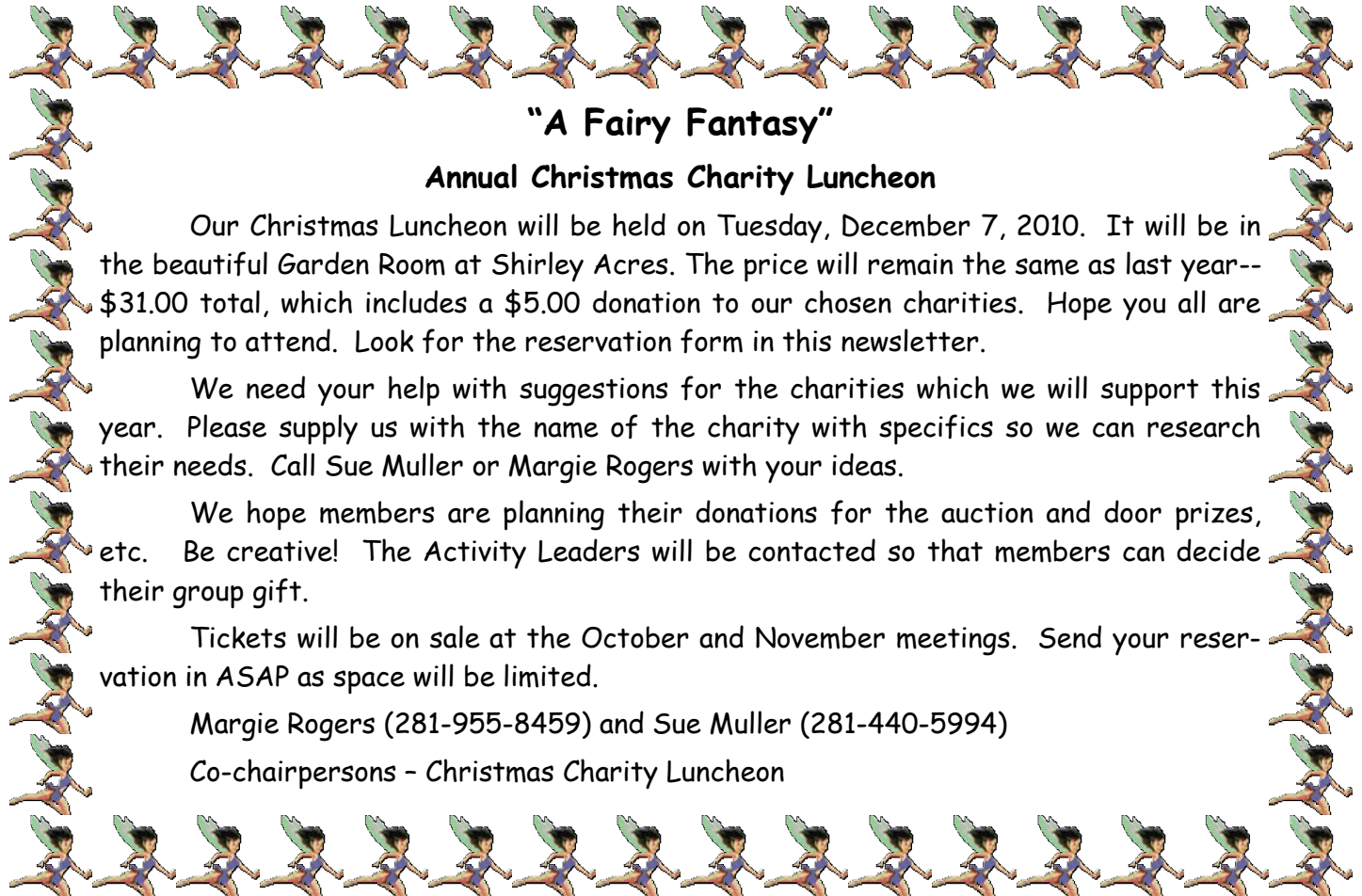
Great news! FAN will be producing a new FAN Cookbook this year. Please look through your tried-and-true recipes and select 3 that you would like to contribute for consideration in the 2011 FAN Cookbook. You can either e-mail or regular mail or bring them to our general meetings.

Contact: Jane Stephens,
jstep125128@yahoo.com,
16810 Sandypine Circle,
Spring, TX 77379

The cookbook is dedicated in loving memory of FAN Angels.

Mark Your Calendars

| | |
|----------------|---|
| NOW | Send Favorite Recipes for new FAN cookbook |
| Sep 7 | First FAN meeting of 2010-11 year |
| Sept 28 | October FAN Meeting |
| Oct 23 | Social: Dinner at d'Vine Wine Bar |
| Oct 29 | Haunting Day trip |
| Nov 2 | FAN Meeting |
| Dec 7 | Christmas Luncheon "A Fairy Fantasy" |
| Dec 14 | Cookie Exchange |



"A Fairy Fantasy"

Annual Christmas Charity Luncheon

Our Christmas Luncheon will be held on Tuesday, December 7, 2010. It will be in the beautiful Garden Room at Shirley Acres. The price will remain the same as last year-- \$31.00 total, which includes a \$5.00 donation to our chosen charities. Hope you all are planning to attend. Look for the reservation form in this newsletter.

We need your help with suggestions for the charities which we will support this year. Please supply us with the name of the charity with specifics so we can research their needs. Call Sue Muller or Margie Rogers with your ideas.

We hope members are planning their donations for the auction and door prizes, etc. Be creative! The Activity Leaders will be contacted so that members can decide their group gift.

Tickets will be on sale at the October and November meetings. Send your reservation in ASAP as space will be limited.

Margie Rogers (281-955-8459) and Sue Muller (281-440-5994)

Co-chairpersons - Christmas Charity Luncheon

PUBLICITY FOR FAN

Thank you FAN members who submitted an article about FAN in their subdivision's newsletter. Please **resubmit** the same article in your subdivision's October newsletter. Our goal is to have this article in as many subdivision newsletters as possible. Here are a few not covered: Greenwood Forest, Candlelight Hills, Shannon Forest, Champions, and Champions Creek Estates. If you don't see an article in your subdivision, please contact Lu Ann Kubis at lukubis@comcast.net or 281-444-0469 and volunteer to add an article next month. The article is already written and all you need to do is submit it to your covered.

Co-Cathedral Trip

The FAN day trip in July was attended by 35 women. The first stop was the lovely Co-Cathedral. Everyone should tour it at least once!



We ate ourselves through the rest of the trip, by eating lunch at the Hobbit Restaurant and then stopping at the Chocolate Bar.

MONDAY AT THE MOVIES



Come join your FAN friends at the movies. The next time will be Monday, Sep 13th (the Monday after the September meeting). Sign up at the meeting, or call Margaret Burgess, 281.304.8977 for more information. What movie we see will depend on what is playing at that time.



Hospitality

Hospitality invites everyone to join us at the first meeting for a **brunch** provided by the FAN Board. If you would like to help by bringing food to future meetings, please contact Helen Timpe, 281-373-3693, or Shirley Limbaugh 281-440-7418.

New on FAN Website

- Photos of Co Cathedral field trip
- Photos of Round Top overnight trip
- Added new members on the Membership Directory Page



Contact **Cindy Ward** for ALL of your **Google Group website** questions, 281-376-8704, cindy@planetward.net

NEW DAY TRIP PLANNED OCTOBER 29th

Mark your calendar for another Day Trip on October 29th.

Do you believe spirits haunt the Greater Houston area? Come and find out. We will start taking reservations at the September General Meeting. Cost \$7.00 plus lunch

Sharlene Wesson, 281.251.6940 &

Susan Busler, 281.370.5258

A GREAT TIME WAS HAD BY ALL



Thirteen FAN gals went on the overnight trip to Round Top. It was very hot, but we had a great time anyway. We started out with a tour of the James Dick Institute — truly amazing! We did a little shopping, a little eating (or was that a lot??). Saturday evening a few of us sat around and listened to Greg, The Piano Man, play country western songs while the rest of the group went to a Shakespeare play in Winedale. Sunday morning, at the Tilworth Retreat, we had a wonderful breakfast out on the porch prepared and served by Marilyn and Bernard who run the bed and breakfast. Several of us toured historical buildings in Winedale and then headed home. It was a very pleasant overnight trip.

ACTIVITIES

DINNER & WINE TASTING SOCIAL EVENING



Saturday, October 23 at D' Vine Wine on Hwy 290

We will enjoy a three course dinner prepared by master chef, Clarence Alexander, served with a wine for each course chosen and described by a wine expert. Open bar for those who would rather choose their own beverage. Dinner \$45 per person, wine paring is \$25. We are limited to 30 guests, so reserve soon.

For more information, call Michelle Strawbridge, (281) 251-3703

ANTIQUES & JUNKERS

This group will meet on Sep 29 (Wed) at the home of Carlene Thompson, 8107 Twining Oaks Lane (Memorial Northwest), 281-3762651. We will gather at 9 a.m. for light refreshments, then carpool to Montgomery and the wonderful shops there. Lunch location will be announced later. All are welcome but please call or email me if you are coming. No longer will the monthly hostess call each person. If you are attending, just call the monthly hostess.

We are a fun group and all you have to do is like to eat and shop.



COUPLES DINNER CANASTA

WHEN: 3rd Saturday of each month

TIME: 6:00 p.m.

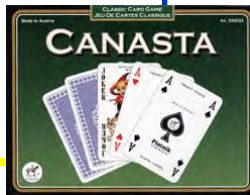
COST: \$2.00 per person, plus dinner

PLACE: **Café Express**, FM 1960 in the
Champions Shopping Center.

CONTACT: **Debbie Laich**,

281-251-5212

debbielaiach@comcast.net



CANASTA II

Where: Egg & I, Louetta Rd, West of 249

Time: 9:45am

Cost: \$1 for game, \$2 tip, plus cost of lunch

Contact: Eileen Kelly, 281.516.1535

Beginners are most welcome. If you are interested in playing, please sign up at the September meeting. Each person will be contacted to confirm the next game.

CANASTA I

We play at Willowbrook Fuddrucker's every 4th Tuesday at 10:00 a.m. Charge: \$3.00

ALL FAN MEMBERS ARE WELCOME!

NO RESERVATIONS!

Questions? Call **Shirley Strack**, 832-717-7640 or **Carol Well**, 281-251-5223

RAILROAD CANASTA

3rd Thursday of the month

Fuddrucker's at 10 am

Cost: \$2.00 to play + lunch

For any questions call Susan Hoff at 832-446 6042 or Barbara Bolz at 281 370 8357. Hope to see you there!



LITERARY REVIEW

Our dear friend Lorraine Farmer passed away peacefully on July 25th. She was a lovely and elegant woman and an enthusiastic book group member. We will miss and remember Lorraine with fondness.

Date: September 22, 1:00 PM
Book: Still Alice by Lisa Genova
Leader: Marilyn Sigler
Hostess: Christel Clark, 281-655-8634
Address: 4626 Wimbledon Villas Drive
Wimbledon Estates

Directions: From Stuebner Airline go east on Louetta, passing Sir William Drive and Spring Creek Forest Dr. (on your left). Turn right on Wimbledon Forest Dr. (2nd Wimbledon Forest Estate entrance). Go to 1st STOP Sign and turn right on Wimbledon Villas Dr. Christel's house is 7th on the right.

In October we will read and discuss Brooklyn by Colm Toibin

Contact: Winnie Mitchell 281-580-6672

FAN COUPLES GOLF



We golf Sat or Sun at nearby courses, and go out to eat afterwards. If you can't commit to attend regularly, please consider being an alternate.

This is no stress golf - keep your own score or play a scramble with your spouse.

Jan Fau. 281-290-9494, Cell 281-728-9948

Wacky Scrappers

I hope everyone had a great summer and collected many photos to scrap this year.

Our first year as "Wacky Scrappers" was very successful. We will continue to meet at Scrapbooking Memories on Stuebner Airline on the **3rd Friday of the month**. Please let me know if you are remaining in the group.

We have room for a few more members. No experience necessary!! This is a fun, pleasant group that share ideas and get a little work done also! Call if you would like to join in the fun and fellowship

Margie Rogers, rogersmargie@yahoo.com,
281-955-8459



PAGE TURNERS BOOK GROUP

Book: My Life in France by Julia Childs
When: Sept 8th, 1 pm
Where: Home of Margaret Hein

THE LUNCH BUNCH

Meets every 3rd Wednesday at 12:00
Noon

Date: September 15th

Hostess: Marie Nichols. Call her

before Sep 13th for reservations.

Bring a non-sweet dish, All welcome for Fellowship and good food.

Chairperson: Sharlene Wesson, 281-251-6940



Dear Friends and Neighbors,

I am very sorry to say that your friend, Lorraine Farmer died on Sunday, July 25th. She had her daughter, husband and granddaughters - sister and husband - long time friend of 38 years, and very close friends with her when she passed peacefully in her sleep. She touched so many people in her life and will be missed by all.

A Memorial service was held on Monday morning, July 26th. A Memorial reception will be held at a later date...I will keep you informed.

Mum had such a lovely life, she was fortunate to be able to travel and live abroad for many years. She was such a special woman, I will miss her ever so deeply

Kathy Newman...(her daughter)

NEW MEMBERS

Clark, Christel 2/23 281-655-8634
6426 Wimbledon Villas Dr (Earl)
Spring, TX 77379 (Wimbledon Estates)
christelnc Clark@yahoo.com

Delaune, Emily 6/5 281-858-9844
8603 Asprey Ct (Ernest)
Spring, TX 77379 (Champion Forest)
edelaune@sbcglobal.net

Christmas Cookie Exchange

Tuesday, December 14th, 11-2pm

Spring Creek Oaks Clubhouse

\$12 per person, Includes Lunch and Prizes

Sign-ups and further details at October and November General Meetings

Contacts: Barbara Gunter, 281-353-7297

Katherine Vanderoef, 281-251-7072

SEPTEMBER 2010

Newsletter Editor:

Adrienne Juno
13530 Missarah Lane
Cypress, TX 77429
281.794.4000

**FRIENDS AND
NEIGHBORS**

OF FM 1960

Editor's Note

All articles for the **October** newsletter should be submitted to the editor (ahjuno@gmail.com) by **September 19th**. Deadline is September 21st.

For address label updates, please contact:
Audie Brooks

Save FAN \$\$\$

The FAN newsletter costs the club over \$300 each month to send to each of you (or \$3000+ per year.). We realize that many of you enjoy getting your newsletter each month via snail mail, but if you would be willing to receive it via email or print your copy from the FAN Google website instead of getting it by post, please let us know. **THIS IS STRICTLY VOLUNTARY**. There will be a sign up sheet at the September meeting or send an email to ahjuno@gmail.com (in the subject line, please put 'Save FAN \$').

**FRIENDS AND NEIGHBORS OF FM 1960
WOMEN'S CLUB**

Cordially invites you to

**"A FAIRY FANTASY"
ANNUAL HOLIDAY CHARITY LUNCHEON**

*Join us for a whimsical celebration of this beautiful season with friends
and enjoy holiday entertainment, door prizes, and delicious fine dining.*

**TUESDAY, DECEMBER 7, 2010
10:00 AM - 2:00 PM**

**SHIRLEY ACRES
THE GARDEN ROOM
217 WOERNER ROAD, HOUSTON, TX, 77090**

\$31.00 which includes a \$5.00 donation to our chosen charity-

Presale tickets only

Tickets will be on sale at the FAN October and November meetings.

Tickets deadline is Tuesday, November 30

**FRIENDS AND NEIGHBORS OF FM 1960 WOMEN'S CLUB
ANNUAL HOLIDAY CHARITY LUNCHEON**

YOUR NAME _____ PHONE _____

**NUMBER OF TICKETS NEEDED _____ AMOUNT ENCLOSED _____
(\$31.00 PER PERSON)**

**MAKE YOUR CHECK PAYABLE TO FAN AND MAIL YOUR ORDER AND CHECK TO:
HELEN TIMPE
15002 MILLS STATION COURT
CYPRESS, TX 77429**